

LC-UPC Multimode Patch Cord

Patch Cord LC-UPC, LSZH Duplex Patch Cord

Infinique's LC-UPC Multimode Patch Cord are pre-polished in the factory and have been designed for low loss and high speed data transmission. Fitted on both sides with Ultra Polished Connectors, the connector housing and shutters fully protect the ferrule against dust, dirt and scratching. Each patch cord passes the stringent 400x visual inspection and are tested for insertion and return loss before being individually packed with the test report.

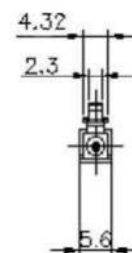
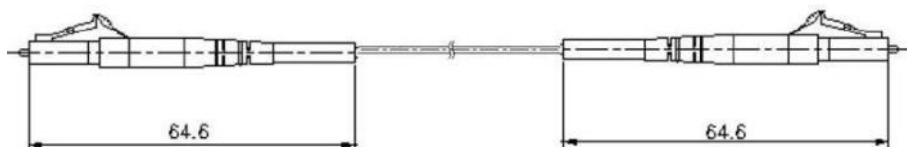
Bend-insensitive, G.657A1 LSOH Multimode TB Fiber is used in the manufacture of patch cords that assures low bending loss and protection against accidental tight bends down to 7.5 mm radius.

To confirm high performance and reliability, these patch cords are tested and certified as per Telcordia standards GR-326, Generic Requirements for Multi-Mode Optical Connectors and Jumper Assemblies.

Features and Benefits

- Certification**
 IEC, EIA/TIA, Telcordia GR-326 Standards
- Reliable Performance**
 Connector End Face Geometry is factory inspected in compliance with Telcordia GR-326 Standard to ensure high performance
- Quality Design**
 Bend-insensitive, G.657A1, Gel Free, LSZH Fiber Cable
- Easy Identification**
 Color coded connectors and cable as per Telcordia standards, unique serial number for traceability
- Speedy Installation**
 Pre-assembled patch cords offers plug-n-play solution and speedy installation

LC-UPC MULTIMODE PATCH CORD CONSTRUCTION



LC-UPC Multimode Patch Cord

Patch Cord LC-UPC, LSZH Duplex Patch Cord

CONNECTOR SPECIFICATIONS	
Connector Type A	LC-UPC
Connector Type B	LC-UPC
Ferrule Material	Ceramic
Connector Polish	UPC
Housing Material	Composite
Housing Color	Beige
Boot Type	Simplex, Duplex
Boot Color	White
Durability	500 minimum mating cycles (IEC 61300-2-2)
Cable Retention	100N, 120s (IEC 61300-2-4)
End Face Geometry	Core Region: No Defects, Clad Region: 3 µm to 20 µm (IEC 61300-3-16/16/23)
End Face Geometry Structure	Curvature Radius: 5-12 µm , Fiber Spherical Height ±0.05 µm, Sphere Offset: ≤ 50 µm
Insertion Loss, Typical	≤ 0.2 dB (IEC 61300-3-4)
Insertion Loss, Max	< 0.3 dB (IEC 61300-3-4)
Return Loss, Max	≥ 65dB (IEC 61300-3-6)
Reflectance, Typical	≤ -65 dB

CABLE SPECIFICATIONS	
Fiber Type	Multimode OM1, OM2, OM3, OM4
Fiber Count	Simplex 1 Fiber, Duplex 2 Fibers
Fiber Core Diameter	9 µm
Wavelengths	1310 nm / 1550 nm
Linear Attenuation	1310nm: 0.38 dB/km / 1550nm: 0.25 dB/km
Minimum Bend Radius	7.5 mm (G.657A1 Bend Insensitive) (IEC 60794-1-2 E11)
Repeated Bending Cycles (r=25mm)	10,000 (IEC 60794-1-2 E6)
Crush Resistance	1000 N/10 cm
Tensile Strength	Installation: 400 N Operation: 2 x 100 (IEC 60794-1-2 E1)
Outer Jacket Diameter	Ø 2.8 mm, Length 1, 2, 3 meter or Custom Length
Outer Jacket Material	LSZH
Outer Jacket Color	OM1: Gray, OM2: Orange, OM3: Aqua, OM4: Violet

TEMPERATURE RANGE	
Installation and Assembly	-20 °C to +60 °C
Operating Temperature	-40 °C to +75 °C
Storage Temperature	-55 °C to +85 °C

STANDARDS
 GR-326, Generic Requirements for Single-Mode Optical Connectors and Jumper Assemblies
 Optical Interface Standards IEC 61754, ISO/IEC 24764
 IEC 61034 and EN 50268 LSOH Low Smoke Zero Halogen
 IEC 60874 Compliant

TEST REPORT FORMAT
 Test Report Print: Packed with each individual product includes: Part Number, Description, Wavelength, Insertion Loss and Return Loss
 Visual Inspection: Quality control visual inspection of the component is conducted to determine if the product passed the quality test.
 Component Packing: Quality control visual inspection of the packing is conducted to determine if the component is packed correctly with product label and test report.

PACKING
 The LC-UPC Multimode Patch Cords are packaged individually along with the printed test report.

ORDERING INFORMATION

Part Number	Description	Connector
IFPCM1LCLCD1	Infinique Fiber Patch Cord LC-LC UPC Multimode OM1 Duplex 1M, LSOH	Multimode LC-UPC
IFPCM2LCLCD1	Infinique Fiber Patch Cord LC-LC UPC Multimode OM2 Duplex 1M, LSOH	Multimode LC-UPC
IFPCM3LCLCD1	Infinique Fiber Patch Cord LC-LC UPC Multimode OM3 Duplex 1M, LSOH	Multimode LC-UPC
IFPCM4LCLCD1	Infinique Fiber Patch Cord LC-LC UPC Multimode OM4 Duplex 1M, LSOH	Multimode LC-UPC
IFPCM1LCLCS1	Infinique Fiber Patch Cord LC-LC UPC Multimode OM1 Simplex 1M, LSOH	Multimode LC-UPC
IFPCM2LCLCS1	Infinique Fiber Patch Cord LC-LC UPC Multimode OM2 Simplex 1M, LSOH	Multimode LC-UPC
IFPCM3LCLCS1	Infinique Fiber Patch Cord LC-LC UPC Multimode OM3 Simplex 1M, LSOH	Multimode LC-UPC
IFPCM4LCLCS1	Infinique Fiber Patch Cord LC-LC UPC Multimode OM4 Simplex 1M, LSOH	Multimode LC-UPC

Custom lengths are available replace the last digit of the part number with the length required in meters.



Infonique, a Canadian company is a manufacturer of high performing end-to-end solutions in copper, fiber and video surveillance systems. For more information visit our website at www.infonique.com or email us at sales@infonique.com.