

# INT612-MW

## 5 Megapixel Thermal Body Temperature Camera with Facial Recognition

Infinique offers a wide range of IP based high definition cameras from 2MP to 6MP available in various housing formats, including Box, Dome and Bullet. Our cameras are equipped with superior image sensor and digital signal processor to produce sharp, crisp pictures and are enclosed in weather and vandal resistant housings making it suitable for use in all security applications. The ONVIF compliance of the cameras helps in easy integration, providing peace of mind for your investment. From small to very large installations, Infinique’s cameras are reliable, future proof and an ideal solution for your video surveillance needs.

The INT612-MW Thermal Camera has been designed to offer a reliable, robust, and high-quality solution for measuring body temperature and facial recognition. The camera housing is ruggedized and has three different streams, regular color high resolution video, thermal video and overlay of regular and thermal video streams. Powered by PoE, the camera becomes an IP-enabled device, and has the ability to record video on any ONVIF compliant recorder or VMS. Operators can select to view any of the three streams, regular color video, thermal video image or the overlay image through the network connection.

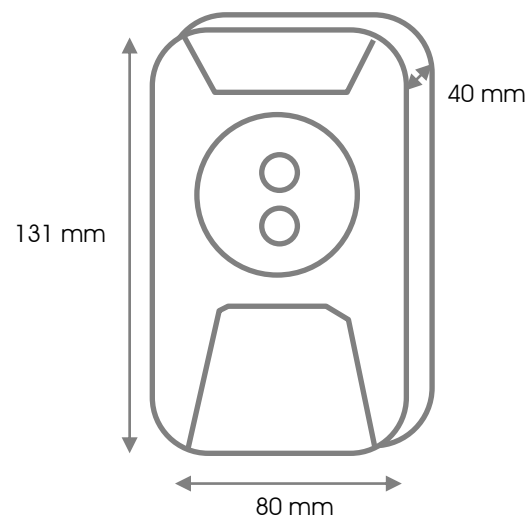
INT612-MW Thermal Cameras have proven themselves as tools that can be operated by non-specialists after a few hours of training. They enable a quick and accurate scan of a large number of people to help detect individuals with high body temperatures, a major symptom of viral and bacterial infections. The use of these cameras as a supplementary diagnostic tool to help detect people with a potential fever may contain or limit the spread of viral diseases such as corona virus, ebola, bird flu, swine flu, SARS and other similar infectious diseases.



### Product Features

- 5MP High Resolution CMOS Sensor
- Dual Sensor, Thermal and Regular Color Video
- Dual Lens offers Color Video and Thermal Overlay
- Quick scans of groups, with video and sound alarm
- Detect person with fever instantly
- Body surface temperature measured with no contact
- Supports Facial Recognition
- Alarm function alert on high temperature
- IR White LED for Night Vision
- Camera Power Status LED
- Ruggedized Housing with IP67 Ratings
- Power Over Ethernet (PoE), IEEE 802.3af
- ONVIF Compliant

### Dimensions



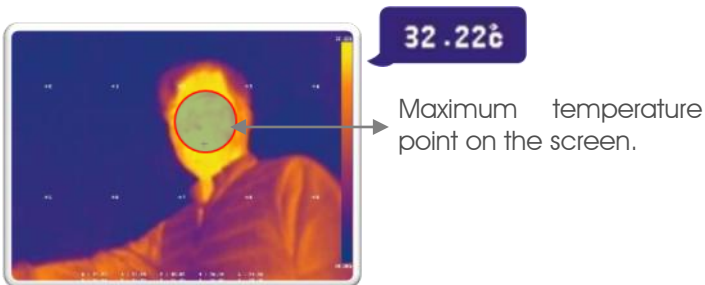
# INT612-MW

## 5 Megapixel Thermal Body Temperature Camera with Facial Recognition

### Emissivity Setup

Emissivity is a key parameter when measuring temperature of any object using a non-contact thermal camera. It determines how accurately the temperature of an object is measured. An object that absorbs external energy and does not reflect is referred to as "Blackbody", which defines emissivity as "1". INT612-MW thermal camera has been calibrated for measuring temperature by using "Blackbody" for temperature accuracy. To measure the temperature of human body more accurately, human skin emissivity which is 0.985 should be applied and this has been calibrated.

### Temperature Compensation



INT612-MW thermal camera has built-in functions to measure the maximum temperature of the face of a person at a distance of 1M from the camera. The camera can be configured to automatically detect the hottest spot and immediately display the temperature value on the monitor. It can also be optimized for fever detection by recalibrating frequently.

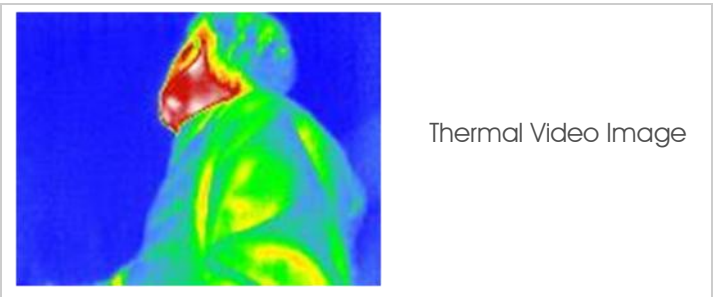
### Thermal Parameter Setup

R	<input type="text" value="979061.00000"/>	<input type="text" value="170500.00, 0~1000000"/>
B	<input type="text" value="2745.00000"/>	<input type="text" value="1628.00, -16384~16383"/>
F	<input type="text" value="-194.75500"/>	<input type="text" value="0.00, -16384~16384"/>
O	<input type="text" value="102.00000"/>	<input type="text" value="7000.00, -16384~16383"/>
Offset	<input type="text" value="4"/>	<input type="text" value="0, -100~100"/>

### Color Maps for Prompt Identification

INT612-MW thermal camera is equipped with dual lens to support regular color video, thermal, and overlay modes. In thermal and overlay mode areas within the camera's field of view that are hotter than a predefined temperature can be immediately recognized on the image display. The built-in color temperature scale enables users to quickly identify whether the person requires further examination.

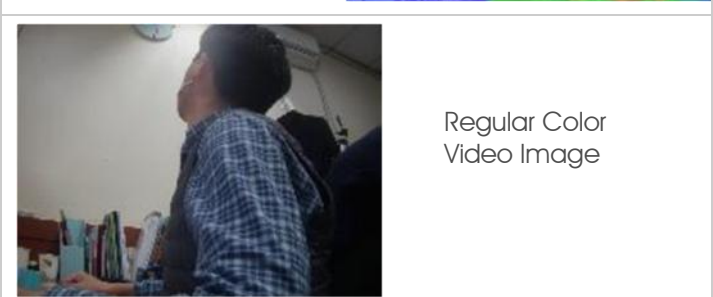
In addition, INT612-MW camera is equipped with an alarm which can be connected to any external alarm device such as buzzer. If the temperature exceeds a predefined set point value, an audible alarm can be triggered. On alarm activation, the subject can then be isolated for further examination.



Thermal Video Image



Overlay Image of Thermal and Regular Video Image



Regular Color Video Image

# INT612-MW

## 5 Megapixel Thermal Body Temperature Camera with Facial Recognition

THERMAL IMAGE	
IR Sensor Frame Rate	< 9 Hz
IR Sensor Resolution	160 (h) × 120 (v) Pixel
Spectral Range	LWIR , 8 to 14 μm
Field of View (FOV)	56° HFOV, 71° diagonal (f/1.1 silicon doublet)
Temperature Sensitivity	<50 mK (0.05°C)
Temperature Range	Low Gain Mode -10 °C ~ 140 °C High Gain Mode -10 °C ~ 450 °C
IMAGE SPECIFICATIONS	
CMOS Sensor	Sony Diagonal 6.15mm CMOS Progressive Scan
Effective Pixels	3096(H) X 2202(V), 6.82M Pixel
Frame Rate	30 fps
Resized Resolution	1600(h) × 1200 (v) Pixel / 800 (h) × 600 (v) Pixel
NETWORK	
Network Port	10/100M BASE-TX, RJ-45 Connector
Cabling Type	Category 6 and higher
Network Protocol	IPv4, HTTP, HTTPS, TCP/IP, UDP, RTP, RTSP, RTCP, DNS, DDNS, DHCP, FTP, NTP, PPPOE, SMTP, SNMP, UPNP
ONVIF Protocol	ONVIF Compliant Profile-S
Security	User Access with password protection
Users	10
MECHANICAL	
Dimensions	131 x 80 x 40 mm
Weight	550g
Housing	Vandal Resistant Aluminum Alloy Housing
Finish	White Powder Coat
Alarm Out	1 Dry Contact, Relay Out
Installation	Tripod, Ceiling or Wall Mount
ELECTRICAL	
Power Consumption	12V DC, 5 Watts
Power Source	PoE IEEE802.3af; DC12V ±10%
ENVIRONMENTAL	
Operating Temperature	0°C to +50°C
Storage Temperature	-20°C to +60°C
Operating Humidity	0% - 85% non condensing
Ingress Protection Rating	IP67
STANDARDS COMPLIANCE	
Emissions	FCC Part 15 Subpart B Class B EN 55022:2010 IC ICES-003 Class B
Immunity	EN 55024:2010
Safety	UL 609501 , EU: 2001/95/EC GSPD

ORDERING INFORMATION	
PART NUMBER	DESCRIPTION
INT612-MW	Infinique 5MP Thermal Camera with Facial Recognition, 160X120 Thermal Detector, High Temperature Measurement Support -10°C ~ 450°C, 1920X1080 in both Thermal and Overlay Mode, Night Vision, 0.5m to 9m Detection Distance, Black Body Emissivity for Accurate Temperature Measurement, Alarm Alert for High Temperature, PoE, IP67, ONVIF Compliant

 Infinique, a Canadian company is a manufacturer of high performance end-to-end solutions in copper, fiber and video surveillance systems. For more information visit our website at [www.infinique.com](http://www.infinique.com) or email us at [sales@infinique.com](mailto:sales@infinique.com).  
An ISO 9001:2008 Company

[www.infinique.com](http://www.infinique.com)

Product specification, design and availability subject to change without prior notice.

Infinique Video Surveillance Solution

Page 3 of 3

DS-VS-NVS-201601V02